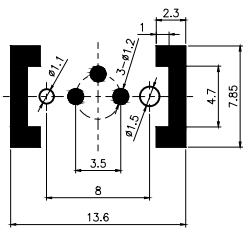
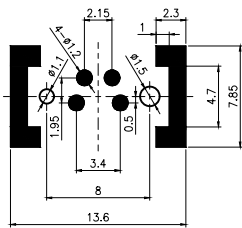


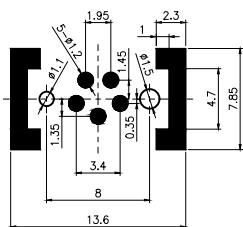
焊盘、定位孔尺寸



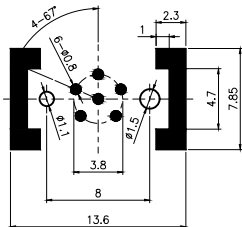
3P



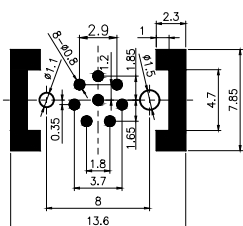
4P



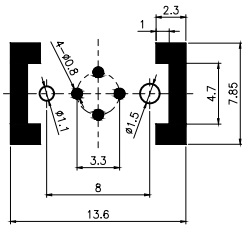
5P B



6P

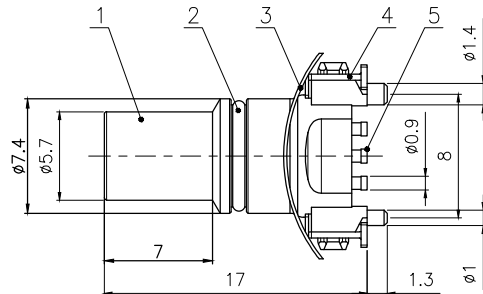
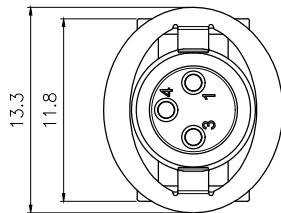


8P



4P D

芯数	3	4	4D	5	6	8
额定电流/电压	3A/60V	3A/60V	4A/60V	3A/30V	1.5A/30V	1.5A/30V
额定脉冲电压	800V	800V	800V	800V	800V	800V
绝缘阻抗 (MΩ)	≥500	≥500	≥500	≥500	≥500	≥500
接触阻抗 (MΩ)	≤ 5	≤ 5	≤ 5	≤ 5	≤ 5	≤ 5



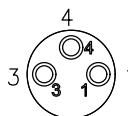
A

3P~6P: $\phi 0.9\text{mm}$

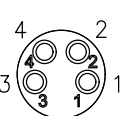
8P: $\phi 0.7\text{mm}$

No.	Specification	Material	Treat	Unit	Q'ty
5	M8 贴片式母针	磷铜	镀金	pc	3~8
4	胶芯屏蔽器件	黄铜	雾锡	pc	1
3	波形垫片	锰钢	镀镍	pc	1
2	防水O型圈 $\phi 7 \times 0.8$	氟橡胶	/	pc	1
1	M8 贴片式母胶芯	LCP	/	pc	1

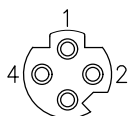
芯位排布



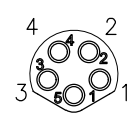
3P



4P



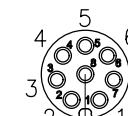
4P D



5P B



6P



8P

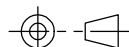
GENERAL TOLERANCE (UNLESS SPECIFIED)

≤10 ±0.1

<10~≤20 ±0.2

<20~≤50 ±0.5

Angle ±1°



THIRD ANGLE

DWN DATE

W.M 2024.2.21

CHK DATE

APVD DATE

STA[®]思大

TITLE M8 贴片式孔型插座

UNIT REV

MM A

PART NO

SIZE SHEET

A4 1 OF 1

DRAWING NO

M8-SMD-Sx